



Creating Sustainable Environments.



SAUTER handles management at the best addresses



UAE



Projects Under Execution

Client: Dubai Airport Free Zone Authority
Consultant: P&T Architects
Contractor: IEMS & Aroma

- BMS Software – SAUTER Vision Center
- System – modulo6
- Datapoints - 50000
- SAUTER has been contracted to design and supply BMS, Chiller Plant manager with energy optimization and performance contract.



The project's scope of work consists of Buisness cluster- 6 towers, Social cluster, Customs building and Central Utility Plant.

BMS controls all HVAC and monitors plumbing and electrical systems.

Energy Monitoring systems monitors all electrical energy meters for providing advance energy management and energy analytics.

The plant manager with optimization module for chiller plant having thermal energy storage is done by Sauter.

Hotel One at Palm
Dubai, U.A.E.

Client: Omniyat

- BMS Software : moduWeb Vision
- System : modulo5



Ultra-luxury residential project at Palm Jumeirah.

Capital View Project, (Plot A01-A04)
ADM Plot C02 Capital Center

Abu Dhabi, U.A.E.

Client: Velocity Property Development LLC
Consultant: APG (Architecture & Planning Group)
Contractor: Electro Mechanical and
Air Conditioning Systems (ELMACS)

- BMS Software – SAUTER Vision Center
- System – modulo5, ecos5
- SAUTER has been contracted to design and supply BMS.



The project's scope of work consists of 2 commercial and residential towers each comprising 24 floors located at Capital Centre, Diplomatic Area, Abu Dhabi. It also includes 320 apartments, 300 serviced apartments, shops, car park and associated facilities.

Dubai Creek Harbour Devp. Creekside Residential Towers, Plot 18a (T17/002)

Dubai, U.A.E.

Client: EMAAR Properties PJSC
Consultant: ATK Engineering Consultant
Contractor: Al Naboodah Contracting Co. LLC

- BMS Software – SAUTER Vision Center
- System – modulo5, ecos5
- SAUTER has been contracted to design and supply BMS & EMS



Dubai Creek Harbour is at the heart of a bold new vision for Dubai. A fusion of creativity and innovation that will define the future of living and further enrich this great city. With spectacular cultural offerings, world class residences, shopping, amenities, offices and more, Dubai Creek Harbour represents the next frontier in contemporary life, work and play.

Dubai Creek Harbour Devp. Plot 19A.019

Dubai, U.A.E.

Client: EMAAR Properties PJSC

Consultant: SSH

Contractor: Al Futtaim Carillion LLC

- BMS Software – SAUTER Vision Center
- System – modulo5, ecos5
- SAUTER has been contracted to design and supply BMS.



Dubai Creek Harbour is at the heart of a bold new vision for Dubai. A fusion of creativity and innovation that will define the future of living and further enrich this great city. With spectacular cultural offerings, world class residences, shopping, amenities, offices and more, Dubai Creek Harbour represents the next frontier in contemporary life, work and play.

EMAAR BLVD Heights

Dubai, U.A.E.

Client: EMAAR

Consultant: Chapman+BDSP

Contractor: ETTS

- BMS Software – SAUTER Vision Center
- System – modulo5, ecos5 and SAUTER has been contracted to supply BMS and CO monitoring Systems for this project.



BLVD Heights is a twin-tower, residential development featuring 492 apartments and located in the heart of Downtown Dubai. All facets of the complex are designed to exude an aura of ultimate luxury, modern elegance and urban relaxation. Floor-to-ceiling windows enhance the feeling of space and light while the combination of subtle colours and textured surfaces ensures a luxurious finish.

Plot A4/A1B-IL Primo by Emaar
Dubai, U.A.E.

Client: EMAAR Properties PJSC
Consultant: WSP
Contractor: Al Shafar United

- BMS Software – SAUTER Vision Center
- System – modulo5
- SAUTER has been contracted to design and supply BMS & Energy Monitoring System along with BTU meters.



Il Primo has redefined luxury and given new meaning to lavish living. It is centrally located in the only cultural and entertainment hub of its kind in the region. Residents of Il Primo live in prime luxury, with ready access to the facilities of Downtown Dubai and the various amenities the building complex offers.

A2/A3 The Address Residence Dubai Opera
Dubai, U.A.E.

Client: EMAAR Properties PJSC
Consultant: Khatib & Alami
Contractor: TAV Construction

- BMS Software – SAUTER Vision Center
- System – modulo5, ecos5
- SAUTER has been contracted to design and supply BMS & Energy Monitoring System along with BTU meters.



Life in the unique development offers five-star concierge style service, as well as some of the world's best dining destinations and attractions right outside the door.

The Cove Dubai Creek Harbour

Dubai, U.A.E.

Client: EMAAR Properties PJSC
Consultant: Holfords Associates
Contractor: Sobha Engineering & Contracting LLC

- BMS Software – SAUTER Vision Center
- System – modulo5
- SAUTER has been contracted to design and supply BMS & Energy Monitoring System along with BTU meters.



The Cove is the latest project to be released by Emaar within the Dubai Creek Harbour master development. Located on the Island District, The Cove possesses a prime location offering stunning, uninterrupted views of Downtown Dubai, The Tower and the Ras Al Khor Wildlife Sanctuary. This waterfront development has been designed and developed to the highest international standards and will boast first rate facilities and living standards.

With a big emphasize on spacious, intelligent and user-friendly layouts, this development will feature a variety of 1, 2 and 3 bedroom apartment options. Each apartment will be built using marble, stone, timber and glass material which will complement the luxurious waterfront location. With an official launch at the end of 2016 the entire projects is due to be completed in Q1 of 2020. Find below further details as well as a project brochure and detailed payment plan.

EMAAR South Residential Apartments at Plot GA-09

Dubai, U.A.E.

Client: EMAAR Properties PJSC
Consultant: Khatib & Alami
Contractor: Airtechnic A/C System LLC

- BMS Software – SAUTER Vision Center
- System – modulo5, ecos5
- SAUTER has been contracted to design and supply BMS.



Overlooking Emaar South's verdant golf course is a haven of stylish apartments, rising elegantly at the heart of the community. Connected by picturesque pathways, golf course promenades and leafy plazas, offering an infinity pool and lush green spaces.

Dubai Harbour Cruise Terminal (Main Package)

Dubai, U.A.E.

Client: SHAMAL

Consultant: DAR

Contractor: Al Shafar General Contracting

- BMS Software – SAUTER Vision Center
- System – modulo5, ecos5
- SAUTER has been contracted to design and supply BMS.



The Dubai Cruise Terminal is located at Port Rashid. It is considered one of the top 5 luxurious ports to dock at. Over 500,000 people yearly dock at Dubai Cruise Terminal. The Port of Dubai facility offers a coffee bar, a deli/lunch operation, and free Internet on five terminals in its business center.

Acacia - 01, Dubai Hills Estate

Dubai, U.A.E.

Client: EMAAR Properties PJSC

Consultant: NEB

Contractor: SECL

- BMS Software – SAUTER Vision Center
- System – modulo5, ecos5
- SAUTER has been contracted to design and supply BMS, EMS and lighting controls.



Acacia is an exclusive collection of apartments set by the lakeside and overlooking the downtown Dubai skyline. The project comprises of 1, 2 and 3 luxurious bedroom units that provides a safe and secure environment and world-class education services to meet each family's needs and more.



**Projects Handed Over in UAE
in Recent Years.**

HYATT PORT VIEWS

Dubai, U.A.E.

Client: Hyatt International (Dubai)
Consultant: Ian Banham & Associates CE
Contractor: Sobha Engineering & Contracting LLC

- BMS Software – SAUTER Vision Center
- System – modulo5, ecos5



The HYATT PLACE Mixed Use Development comprises of 3 Blocks – A : Hotel Apartments, B-Hotel & C-Residences (2B + G + 7 Floors each).

The HVAC systems namely the Chilled water pumps, Heat Exchangers, Air Handling Units, Fan Coil Units, Parking ventilation fans, Jet fans, Heat recovery units and Exhaust fans are being monitored and controlled from BMS. The life safety systems like Fire Alarm system, Fire Fighting system, FM200, Central Battery System and the plumbing systems like Sumps Pumps, Booster Pumps, Pressurization Unit, Water Tanks, and swimming pool pumps are being hardwire interfaced and monitored in BMS.

Al Thowima Tower

Dubai, U.A.E.

Client: Meraas Development
Consultant: Dewan Architectures & Engineers
Contractor: Al Shafar National Contracting Co. LLC

- BMS Software – SAUTER vision Center
- System – modulo5, ecos5



The project comprises 127 Apartments - 1, 2 & 3-bedrom apartments including a retail spaces on the ground floor. The project also includes communal recreational facility with a gym and a rooftop pool deck.

Souk Warsan Zone 1 & 2

Dubai, U.A.E.

Client: NAKHEEL
Consultant: AE7 Consultancy Services
Contractor: Ozone

- BMS Software – SAUTER Vision Center
- System – modulo5, ecos5, ecos311 and SAUTER Valveco regulating valve
- SAUTER has been contracted to supply BMS, PICV, and BTU meters for this project.



This development is composed of eight buildings with approximately 129,600 sqm of retail space. The ground floor retail will have an air conditioned, sky lit atrium space, escalators and elevators and bridge crossings, providing various opportunities for retail kiosks. The first floor of each building has been designed with flexibility to allow for either retail or office spaces as desired. The retail element of this project encompasses two floors of flexible retail outlets, space for larger Anchor tenants and dispersed food and beverage units.

**Proposed Formulation Facility at Dubai
(Formulation Plant)** Dubai, U.A.E.

Client: Microsynergy Pharmaceuticals FZCO
Consultant: Knexir Consultant PVT. LTD
Contractor: Flaktwoods LLC

- BMS Software – SAUTER Vision Center
- System – modulo5



SAUTER has been contracted to design and supply BMS, and clean room display units with EMS.

Deportation Prison
Sharjah, U.A.E.

Client: Sharjah Directorate of Public Works

- BMS Software : SVC
System : modulo5, ecos5, ecos302



New deportation prison in Emirate of Sharjah comprising 18 buildings.

Al Habtoor Residences Tower 1, 2 & 3

Dubai, U.A.E.

Client: Dubai National Investment Co. LLC

Consultant: Atkins

Contractor: Arabel

- BMS Software – SAUTER Vision Center
- System – modulo5, ecos5, ecos302, NRT
- SAUTER has been contracted to supply BMS, Car park Ventilation system and BTU meters for all 3 towers



Gracing Al Habtoor City and the famed Dubai skyline are three luxurious residential towers – Noora, Amna and Meera - two 73-storey towers and one 52-storey tower. The new neighborhood, right on the banks of the Dubai Water Canal, represents exceptional living elevated to the highest level of luxury in an all-inclusive setting, and boasting stunning skyline views of Dubai.

Hyatt Place
Dubai, U.A.E.

Client: Wasl Real Estate
Consultant: Bel-Yoahah
Contractor: Al Shafar General Contracting

- BMS & GRMS Software – nova Pro Open
- System – modulo5, ecos5



The HYATT PLACE Mixed Use Development comprises of 3 Blocks – A, B & C (2B + G + 7 Floors each). The BMS system in this project comprises of two parts - The Room management system (84 Hotel Apartments in Block-A & 218 Hotel Rooms in Block-B) and Building Management System (HVAC controls system & Monitoring of Utilities)

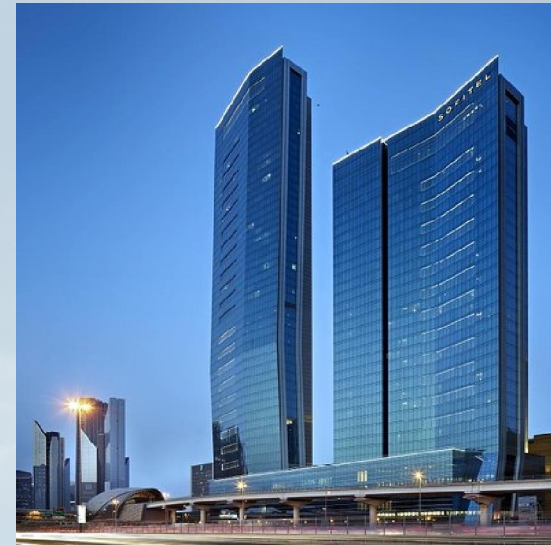
The HVAC systems namely the Chilled water pumps, Heat Exchangers, Air Handling Units, Fan Coil Units, Parking ventilation fans, Jet fans, Heat recovery units and Exhaust fans are being monitored and controlled from BMS. The life safety systems like Fire Alarm system, Fire Fighting system, FM200, Central Battery System and the plumbing systems like Sumps Pumps, Booster Pumps, Pressurization Unit, Water Tanks, and swimming pool pumps are being hardwire interfaced and monitored in BMS.

The Room Management System in HYATT PLACE comprises the control of the Guest Room FCUs which is interlocked with the Room Door, its windows open/close condition, and the guest occupancy status determined by the guest room card. The RMS system is also connected to the Hotel Room Booking system over BACnet IP protocol.

Sofitel Hotel Downtown & Burj Gate-48 Dubai, U.A.E.

Client: H.H Saeed Bin Zayed Al Nahayyan
Consultant: KEO
Contractor: ACC

- Management level – novaPro Open
- Automation level – modulo5 BACnet IP
- The BMS for both the towers are installed and maintained by SAUTER.



The Mixed Use Development comprises of 2 TOWERS – Sofitel Hotel and Burj Gate -48 Residential Tower.

The HVAC systems namely the Chilled water pumps, Heat Exchangers, Air Handling Units, Fan Coil Units, Parking ventilation fans, Jet fans, Heat recovery units and Exhaust fans are being monitored and controlled from BMS. The life safety systems like Fire Alarm system, Fire Fighting system, FM200, Central Battery System and the plumbing systems like Sumps Pumps, Booster Pumps, Pressurization Unit, Water Tanks, and swimming pool pumps are being hardwire interfaced and monitored in BMS.

Metropolitan Hotel

Dubai, U.A.E.

Client: Metropolitan Hotel
Consultant: Khatib & Alami
Contractor: Commodore Contracting

- BMS Software – SAUTER Vision Center
- System – modulo5 BACnet / IP



Millennium Airport Hotel
Dubai, U.A.E.

Millennium Airport Hotel
Dubai, U.A.E.

Client: Millennium Hotel

- Management level – novaPro Open
- Automation level – EYR203 & EYE200



Signature Tower, the new Vivanta by Taj Hotel in Dubai's JLT Dubai, U.A.E.

Client: Signature Residences Limited

Consultant: Specialized Engineering Consultants (SPEC)

Contractor: Al Shafar General Contracting

- BMS Software – SAUTER Vision Center
- System – modulo5, ecos5, ecos302, NRT
- SAUTER has been contracted to supply BMS for Hotel as well as Residences with dedicated hot backup redundant BMS



Now popularly referred to as Signature Tower, the new Vivanta by Taj Hotel in Dubai's Jumeirah Lakes Towers District, is a Middle East first, being developed for India's Taj Hotels Resorts & Palaces, in collaboration with Chaudhary Group and Signature Real Estate.

The 207-key hotel and residential tower is being constructed over 45 floors, with 4 additional basement floors and 2 mechanical floors. It is rated in the 5-star Upper Upscale segment and offers travelers a unique combination of style and sophistication.

To create the quiet and relaxing internal environment expected by guests, and meet the tight build schedule, multi-discipline Fit Out, MEP and Maintenance contractor, Plafond, needed an internal partition solution that could be installed quickly to meet different performance standards in different parts of the structure.

Majestine Hotel Apartments

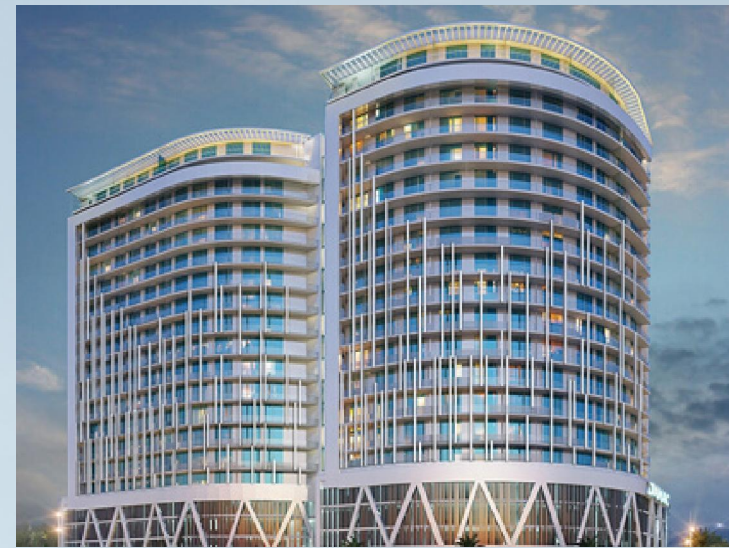
Dubai, U.A.E.

Client: DAMAC

Consultant: BH.NS Engineering Consultant

Contractor: Nascon Engineering

- BMS Software – moduWeb Vision
- System – modulo5 BACnet / IP



Dragone Theatre - La Perle
Dubai, U.A.E.

Client: Al Habtoor Group
Consultant: Khatib & Alami
Contractor: Comodor Contracting Co.

- BMS Software – novaPro Open with hot backup configuration
- System – modulo5, ecos5
- All special effects engineered and controlled by special effects system is monitored only in BMS.
- The engineers run the show with the feedback provided by BMS on real time basis.



One-of-a-kind theatre built in the heart of Al Habtoor City, La Perle Created and produced by one of the world's most renowned artistic directors, Franco Dragone is the region's first resident show, featuring a cast of 65 artists, each bringing their own unique set of skills to the performance, ranging from acting, acrobats, aquatic and aerial stunts.

Sheikh Khalifa General Hospital-200 Beds

Umm Al Quwain, U.A.E.

Client: Ministry of Presidential Affairs (MOPA)

Consultant: HDP

Contractor: STS

- Management level – novaPro Open
- Automation level – modulo5 BACnet IP



Systems Monitored

- Sump Pumps, Irrigation Pumps, Booster Pumps, Tanks
- MDBs, SMDBs
- Medical Gasses
- CCTV

Software Integration

- Fire Alarm System
- Power Monitoring Units

Systems Monitored & Controlled

- AHUs, FAHUs
- General Exh. Fans, Kitchen Exh. Fans
- Secondary Pumps, Booster Pumps
- Fan Coil Units
- VAVs
- Chillers and Primary Pumps

Mediclinic
Dubai, U.A.E.

Client: Mediclinic

- BMS Software : NovaPro Open & SVC
- System : modulo5, ecos302, NRT



GATE AVENUE (DIFC)
Dubai, U.A.E.

Client: DIFC Development Authority
Consultant: WME
Contractor: HLG

- BMS Software – SAUTER Vision Center
- System – modulo5, ecos5, ecos 302
- SAUTER has been contracted to design and supply BMS, Energy Monitoring System and Tenant Billing System (Electricity, BTU, Water & Gas) for the project.



Gate Avenue, the new retail and fashion experience brought to you by DIFC extends from The Gate Building to Central Park Towers, providing a seamless, fully connected year-round walkable destination including an outdoor promenade. Furthering the Centre's reputation for iconic architecture, Gate Avenue is introducing over 185 retail, dining, fashion and lifestyle concepts.

MARINA GATE Towers

Dubai, U.A.E.

Client: Select Group

Consultant: Black & White Engineering

Contractor: Samsung Hanwa Techwin

- BMS Software – SAUTER Vision Center
- System – modulo5, ecos5
- Tower-1 BMS is completed and currently being handed over to client.
- Tower-2 BMS is under execution.
- Tower-3 will also be done by SAUTER. Expected to start in Q-4 2019



The Residences at Marina Gate is a triumvirate of residential towers at the original gateway to Dubai Marina. Surrounded by the Arabian Gulf on one side and the marina on the other. The development consists of 3 residential towers with connected walkways for over 50 retail outlets and a wide range of recreational amenities including a supermarket, gym, salons and sports facilities located on the ground and mezzanine levels.

The Edge Tower, Tecom
Dubai, U.A.E.

Client: Sweid & Sweid Development FZ. LLC
Consultant: Clarke Samadhin
Contractor: MENASCO

- BMS Software – moduWeb Vision
- System – modulo5 BACnet / IP



The Beach at JBR
Dubai, U.A.E.

Client: MERAAS Development
Consultant: Clarke Samadhin
Contractor: ETA

- BMS Software – nova Pro Open
- System – modulo5 BACnet / IP



SAUTER has installed BMS and Car Park Ventilation system for this beach side entertainment facility.

DEC Tower
Dubai, U.A.E.

Client: MERAAS Development
Consultant: Clarke Samadhin
Contractor: ETA

- Management level - EY3600 novaPro32
- Automation level - EY3600 nova
- Protocol – NovaNet
- Controller – EYR-203F001
- Devices – FAHU, Cooling Tower, FCU, CHWR Pump
- Data points – 1,545



A residential building with an office complex, combined with spectacular architecture, setting some demanding climate requirements.

SAUTER's building management takes care of them.

Al Rawdha Palace
Dubai, U.A.E.

Client: Ministry of Presidential Affairs

- BMS Software : moduWeb Vision
- SYStem : modulo5



Palace of H.H. Sheikh Khalifa Bin Zayed.

Digdagga Civil defence building & Police Station
Ras Al Khaimah, U.A.E.

Client: Ministry of Interior

- BMS Software : Sauter Vision Center
- System : modulo5, ecos302



Emirates Kitchen Flight Catering

Dubai, U.A.E.

Client: EKFC

- BMS Software : NovaPro Open & SVC
- System : modulo5, ecos302, NRT



The project involves the construction of a commercial building comprising of a basement level, a ground floor and four additional floors.

HSBC Head Office
Dubai, U.A.E.

Client: HSBC

- BMS Software : SVC
- System : modulo5, ecos5, ecos302



HSBC Head Quarter Building - The project involves the construction of a 20-storey headquarter building, comprising 320,000 square-feet of office space. The headquarters' total area, including parking and facilities, will be approximately 861,000 square feet.



Projects by NAFFCO - UAE

MEADOW RETAIL CENTER DEVELOPMENT FOR EMAAR MALL
DUBAI, U.A.E.

Client: EMAAR Mall PJSC
Consultant: DLR Group
Contractor: Amana Steel Building Contracting L.L.C.

- BMS Software – Modu Web Vision
- System - modulo5 BACnet / IP
- Naffco has been contracted to design supply & installation of BMS



B+G+5 STUDENT ACCOMMODATION BUILDING (7 BLOCKS)
ABU DHABI, U.A.E.

Client: FIM Partners, SHG
(Strategic Housing Group)
Consultant: Green Concept Engineering Consultant
Contractor: Space Electro-Mechanical

- BMS Software – SAUTER Vision Center
- System - modulo5 BACnet / IP
- Naffco has been contracted to design supply of BMS



**G+1 COMMUNITY RECREATION & LEISURE FACILITY,
AL YUFRAH 3, DUBAI
DUBAI, U.A.E.**

Client: Damac Properties L.L.C.
Consultant: Lacasa Architects &
Engineering Consultants
Contractor: Conversion Electromechanical CO. L.L.C.

- BMS Software – Modu Web Vision
- System - modulo5 BACnet / IP
- Naffco has been contracted to design supply of BMS



**AL RIYADH NORTH COMMUNITY CENTRE, STRIP MALL, SHAMKAIH
ABU DHABI, U.A.E.**

Client: Modon Properties
Consultant: Amar Goden Design
Contractor: Amana Contracting & Steel Building
Company WLL

- BMS Software – SAUTER Vision Center
- System - modulo5 BACnet / IP
- Naffco has been contracted to design supply & installation of BMS



**PROPOSED G+1 COMMERCIAL & RETAIL BUILDING,
PLOT NO. 9229098, AT AL YALAYIS 2
DUBAI, U.A.E.**

Client: Nshama Properties Owned By Nshmi
Development One Person Company-L.L.C.
Consultant: Spacetech Engineering Consultancy
Services
Contractor: Beaver Gulf

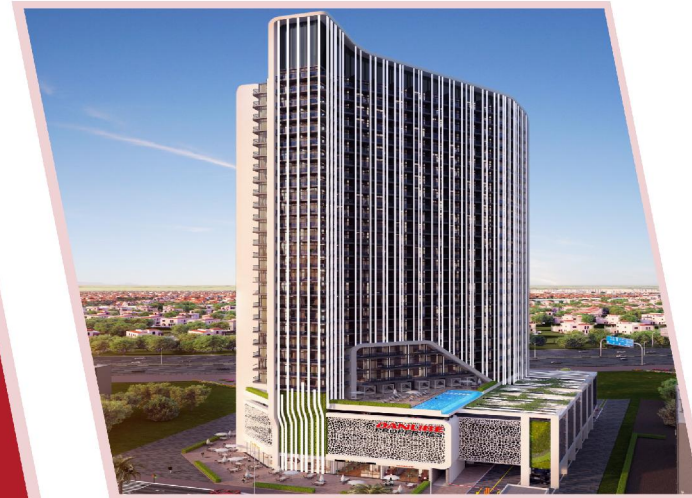
- BMS Software – Modu Web Vision
- System - modulo5 BACnet / IP
- Naffco has been contracted to design supply of BMS



**BAYZ BY DANUBE 2B+G+29F+COMMERCIAL &
RESIDENTIAL BUILDING - BUSINESS BAY**
DUBAI, U.A.E.

Client: Danube Properties
Consultant: National Engineering Bureau
Contractor: RAQ Contracting Co. L.L.C.

- BMS Software – SAUTER Vision Center
- System - modulo5 BACnet / IP
- Naffco has been contracted to design supply & installation of BMS



**2B+G+3P+16 TYPICAL+LR+UR RESIDENTIAL / COMMERCIAL BUILDING,
PLOT NO. 346-0763, BUSINESS BAY
DUBAI, U.A.E.**

Client: Mr. Ali Abdulla Moh'd Al-Shirawi
Consultant: Art Consultant
Contractor: Gulf Asia Contracting Co L.L.C.

- BMS Software – SAUTER Vision Center
- System - modulo5 BACnet / IP
- Naffco has been contracted to design supply & installation of BMS



**B+G+M+6+RF, COMMERCIAL BUILDING,
PLOT NO. 0976, MID SECTOR, JURF 2- BLOCK B
AJMAN, U.A.E.**

Client: Ajman Boulevard L.L.C.
Consultant: CHSS Consultant
Contractor: Gulf Asia Contracting Co L.L.C.

- BMS Software moduWeb Vision
- System - modulo5 BACnet / IP
- Naffco has been contracted to design supply & installation of BMS



MAYA 1, MAYA 4, AL BARSHA
DUBAI, U.A.E.

Client: Montreal Management Consultant
Consultant: Emirates Design Consortium
Contractor: CONT.CO.L.L.C. NS CO

- BMS Software – SAUTER Vision Center
- System - modulo5 BACnet / IP
- Naffco has been contracted to design supply & installation of BMS



**RAWDHAT COMMERCIAL / RESIDENTIAL BUILDING SECTOR NO E48,
PLOT NO. 99
ABU DHABI, U.A.E.**

Client: Reem Developer
Consultant: Target Engineering
Contractor: URUK General Contracting

- BMS Software – SAUTER Vision Center
- System - modulo5 BACnet / IP
- Naffco has been contracted to design supply & installation of BMS



G+63 RESIDENTIAL BUILDING A TOWER, TRADE CENTER
DUBAI, U.A.E.

Client: AMA Holding
Consultant: National Engineering Bureau (NEB)
Contractor: CRC Engineering & Re Construction
Company L.L.C

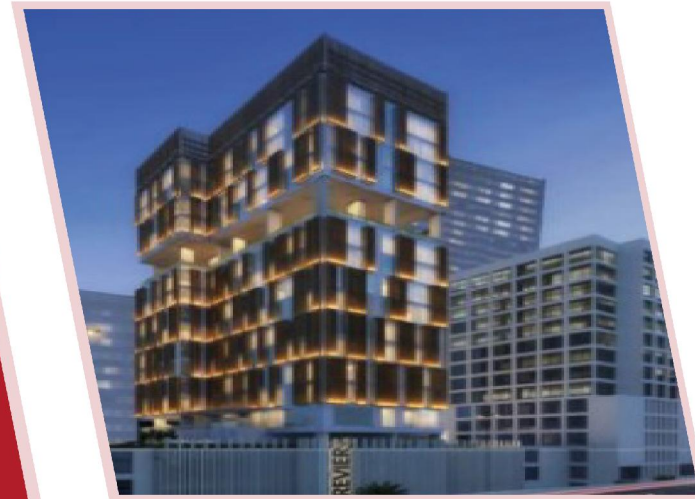
- BMS Software – Modu Web Vision
- System - modulo5 BACnet / IP
- Naffco has been contracted to design supply & installation of BMS



**G+2P+16 STOREY BUILDING, RIVER HOTEL,
PLOT NO. 3460579, BUSINESS BAY
DUBAI, U.A.E.**

Client: Avantime/Eagle Wing
Consultant: Consistent Engineering Consultant
Contractor: Aroma Contracting L.L.C.

- BMS Software – SAUTER Vision Center
- System - modulo5 BACnet / IP
- Naffco has been contracted to design supply & installation of BMS



**PROP.G+6 OFFICE BUILDING,
PLOT# 0976 @ MID SECTOR - AL JURF
AJMAN, U.A.E.**

Client: Ajman Disabled Club
Consultant: Ministry of Infrastructur
Development & Design Department
Contractor: Al Awael Building Contracting

- BMS Software – Modu Web Vision
- System - modulo5 BACnet / IP
- Naffco has been contracted to design, installation & supply of BMS.



**B+G+M+6+RF, OFFICE BUILDING,
PLOT NO. 0976, MID SECTOR, JURF 2 - BLOCK A
AJMAN, U.A.E.**

Client: Ajman Boulevard L.L.C.
Consultant: CHSS Consultant
Contractor: Gulf Asia Contracting Co L.L.C.

- BMS Software – Modu Web Vision
- System - modulo5 BACnet / IP
- Naffco has been contracted to design supply & installation of BMS



**G+3P+10F+R RESIDENTIAL BUILDING, PLOT NO. 6488539, DUBAI
LAND RESIDENCES AT WADI AL SAFA-5
DUBAI, U.A.E.**

Client: Awtad Real Estate CO. L.L.C.
Consultant: Al Ajmi Engineering Consultants
Contractor: Modern Executive System Contracting

- BMS Software – Modu Web Vision
- System - modulo5 BACnet / IP
- Naffco has been contracted to design supply & installation of BMS



**G+4 RESIDENTIAL BUILDING (RB-37 & RB-80), DUBAI SOUTH
DUBAI, U.A.E.**

Client: Credo Investment FZE
Consultant: National Engineering Bureau
Contractor: Vision House Building Contracting L.L.C.

- BMS Software – Modu Web Vision
- System - modulo5 BACnet / IP
- Naffco has been contracted to design supply & installation of BMS



**CONSTRUCTION OF CIVIL DEFENCE CENTER,
PLOT NO. 356, AL DAR BAIDA
UM AL QUWAIN, U.A.E.**

Client: Ministry of Infrastructure Development
Design Department

Consultant: Ministry of Infrastructure Umm Al Quwain

Contractor: Orion Contracting

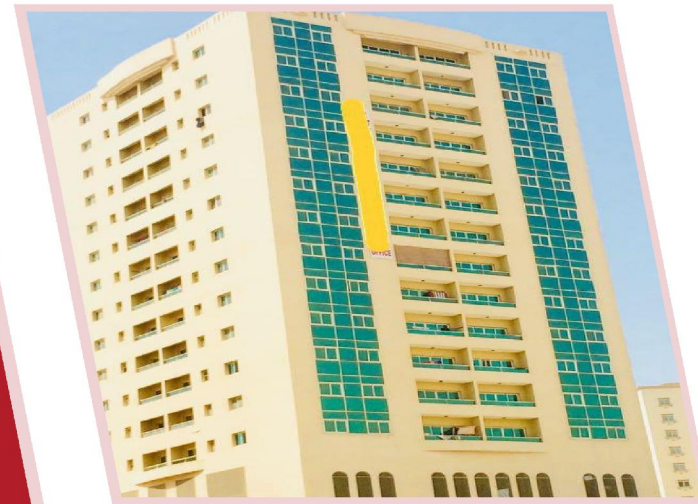
- BMS Software – Modu Web Vision
- System - modulo5 BACnet / IP
- Naffco has been contracted to design supply & installation of BMS



AJMAN TOWER
AJMAN, U.A.E.

Client: Montreal Management Consultant Est
Consultant: Engineering Design Consortium
Contractor: Havard Contracting L.L.C.

- BMS Software – Modu Web Vision
- System - modulo5 BACnet / IP
- Naffco has been contracted to design supply & installation of BMS



**B+G+9 RESIDENTIAL BUILDING,
PLOT NO. PJCRC 36A_38H, PALM JUMERIAH
DUBAI, U.A.E.**

Client: Azizi Investment L.LC
Consultant: 360 Degrees Architectural
Design Consultancy L.L.C
Contractor: MAC Electromechanical Engineering L.L.C

- BMS Software – Modu Web Vision
- System - modulo5 BACnet / IP
- Naffco has been contracted to design Supply (Excluding Cables) of BMS





Projects in Oman

BP KHAZZAN

MUSCAT, Sultanate of Oman

Client: BP KHAZZAN

Consultant: Andrew Reid

Contractor: BP Khazzan

- BMS Software – SAUTER Vision Center
- System – modulo 525, ecos504/505, EY-RC500,
- SAUTER has been contracted to design and supply BMS & EMS



The Ghazeer project is expected to come onstream in 2021 and deliver an additional 0.5 bcf/d and over 15,000 bpd condensate production. Drilling on the first three development wells has begun, following appraisal drilling on Ghazeer last year. Initial construction work has already started at Khazzan to accommodate a third gas train and associated infrastructure.

The Khazzan and Ghazeer, developments are expected to deliver total production of 10.5 tcf of gas and around 350 million barrels of condensate through the end of concession.

RESIDENTIAL BUILDING TO CONTROL THE HVAC OF COMMON AREAS

MUSCAT, Sultanate of Oman

Residential Building to control the Heating, Ventilation, and Air conditioning of common areas.

- System – Novanet
- HMI – Interactive Touch Panels.



Projects in Egypt

National Bank of Egypt-B220
Cairo, Egypt

National Bank of Egypt-B220

Location : Smart Village
City : Cairo, Egypt
Building Type : Bank
System : nP32 BMS
Data Points : 300
Year : 2008



Egypt Post
Cairo, Egypt

Egypt Post

Location : Smart Village
City : Cairo, Egypt
Building Type : Offices
System : nPO BMS
Data Points : 3200
Year : 2006



B2401

Cairo, Egypt

B2401

Location : Smart Village

City : Cairo, Egypt

Building Type : Educational & Offices

System : nPO BMS

Data Points : 5000

Year : 2010



TE-Data

Cairo, Egypt

TE-Data

Location : Smart Village

City : Cairo, Egypt

Building Type : Offices

System : nP32

Data Points : 1750

Year : 2006



ECG

Cairo, Egypt

ECG

Location : Smart Village

City : Cairo, Egypt

Building Type : Offices

System : nPO

Data Points : 1900

Year : 2010



Telecom Egypt

Cairo, Egypt

Telecom Egypt

Location : Smart Village
City : Cairo, Egypt
Building Type : Telecommunication
System : nPO
Data Points : 4800
Year : 2004



Alexandria Bank

Cairo, Egypt

Alexandria Bank

Location : Smart Village
City : Cairo, Egypt
Building Type : Bank
System : nPO
Data Points : 800
Year : 2012



CBI
Cairo, Egypt

CBI

Location : Smart Village
City : Cairo, Egypt
Building Type : Bank
System : nPO
Data Points : 3850
Year : 2015



VALEO

Cairo, Egypt

Valeo

Location : Smart Village

City : Cairo, Egypt

Building Type : Offices

System : nPO

Data Points : 490

Year : 2010



TELE TECH
Cairo, Egypt

Tele Tech

Location : Smart Village
City : Cairo, Egypt
Building Type : Offices
System : nPO
Data Points : 1600
Year : 2010



Ramses Hilton

Cairo, Egypt

Ramses Hilton

City : Cairo, Egypt

Building Type : Hotel

System : Provi upgraded to nPO

Data Points : 1900

Year : 1999



Sheraton Dream Land

Cairo, Egypt

Sheraton Dream Land

City : Cairo, Egypt
Building Type : Hotel
System : nP 32
Data Points : 220
Year : 2009



Movenpick Aswan

Cairo, Egypt

Movenpick Aswan

City : Aswan, Egypt
Building Type : Hotel
System : nP32
Data Points : 2200
Year : 2007



Helnan Palastine

Cairo, Egypt

Helnan Palastine

City : Alexandria, Egypt

Building Type : Hotel

System : Provi upgraded to nPO Data Points : 300

Year : 2002



Sheraton Luxor

Cairo, Egypt

Sheraton Luxor

Location : Smart Village

City : Cairo, Egypt

Building Type : Offices

System : nPO

Data Points : 1600

Year : 2010



Sun Rise Hotel

Cairo, Egypt

Sun Rise Hotel

City : Sharm El Sheikh, Egypt
Building Type : Hotel
System : Provi
Data Points : 1200
Year : 2001



Sun Rise Hotel

Cairo, Egypt

Sun Rise Hotel

City : Ein El-Sukhna, Egypt
Building Type : Hotel
System : nP32
Data Points : 2100
Year : 2008



Mostafa Kamel Hotel

Cairo, Egypt

Mostafa Kamel Hotel

City : Alexandria, Egypt
Building Type : Hotel
System : nP32
Data Points : 3200
Year : 2010



Acasia Hotel
Cairo, Egypt

Acasia Hotel

City : Ras El-Bar , Damietta, Egypt
Building Type : Hotel
System : stand alone
Year : 2012



Hilton Zamalek Hotel

Cairo, Egypt

Hilton Zamalek Hotel

City : Cairo, Egypt
Building Type : Hotel
System : nP32
Data Points : 1100
Year : 2006

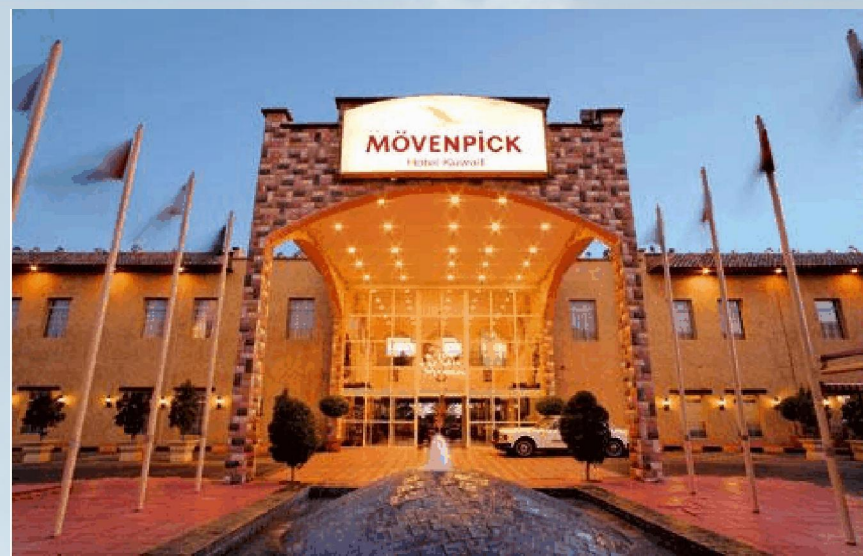


Movenpick Pyramids Hotel

Cairo, Egypt

Movenpick Pyramids Hotel

City : Giza, Egypt
Building Type : Hotel
System : nPO
Data Points : 1400
Year : 2012



Meridian Dahab Hotel
Cairo, Egypt

Meridian Dahab Hotel

City : Dahab, Red Sea, Egypt
Building Type : Hotel
System : Stand alone
Year : 2007



Marriott Cairo Hotel

Cairo, Egypt

Marriott Cairo Hotel

City : Gezira, Cairo, Egypt
Building Type : Hotel
System : nP32
Data Points : 3100
Year : 2007



Aida Hotel
Cairo, Egypt

Aida Hotel

City : Sharm El-Sheikh, Egypt
Building Type : Hotel
System : plant room stand alone
Year : 2012



Novotel El-Borg Hotel

Cairo, Egypt

Novotel El-Borg Hotel

City : Gezira, Cairo, Egypt
Building Type : Hotel
System : nP32
Data Points : 750
Year : 2010



Novotel El-Borg Hotel
Cairo, Egypt

Hilton Borg El-Arab Hotel

City : Alexandria, Egypt
Building Type : Hotel
System : Stand alone
Year : 2011



Le-Passage Hotel

Cairo, Egypt

Le-Passage Hotel

City : Cairo, Egypt
Building Type : Hotel
System : nPO
Data Points : 2000
Year : 2010



Shepherd Hotel

Cairo, Egypt

Shepherd Hotel

City : Cairo, Egypt

Building Type : Hotel

System : Stand alone / plant room

Year : 2010





Projects in KSA

Projects in KSA

| S.NO | PROJECT | CLIENT |
|------|---|-----------------------------|
| 1 | Shauiba | Saudi Aramco Shuaiba |
| 2 | Health Center | Saudi Aramco Abquick |
| 3 | Hawiyah Gas plant | Saudi Aramco Hawiyah |
| 4 | Khursaniyah , KGP | Saudi Aramco Khursaniyah |
| 5 | Khursaniyah ,support facilities | Saudi Aramco Khursaniyah |
| 6 | Dahran District Cooling System Building | Saudi Aramco Dahran |
| 7 | Dahran Ware house building | Saudi Aramco Dahran |
| 8 | Dahran Office buildings-D&WO | Saudi Aramco Dahran |
| 9 | AGOC Khafji , switchgear building | Saudi Aramco Khafji |
| 10 | Qurayya operation support buildings | Saudi Aramco Qurayya |
| 11 | Qassim ,Block valve station | Saudi Aramco Qassim |
| 12 | Yanbu | Saudi Aramco Yanbu |
| 13 | Jedha | Saudi Aramco |

Projects in KSA

| S.NO | PROJECT | CLIENT |
|------|--|----------------------------|
| 14 | Uthmaniyah | Saudi Aramco |
| 15 | Khurais site preparation | Saudi Aramco Khurais |
| 16 | Khurais Oil Plant (Main Plant) | Saudi Aramco Khurais |
| 17 | Khurais Oil Plant (Common Facilities) | Saudi Aramco Khurais |
| 18 | Khurais Oil Plant (Residential) | Saudi Aramco Khurais |
| 19 | Abu Ali Administration | Saudi Aramco Jubail |
| 20 | Sales Gas Metering Station | Saudi Aramco Jubail |
| 21 | Shybah GOSP 1, 2, & 3 Control and Substation Bldg. | Saudi Aramco Shybah |
| 22 | Al Crude Increment III Facilities | Saudi Aramco Haradh |
| 23 | Inspection Building Replacement | Saudi Aramco Ras Tanura |
| 24 | Ras Tanura Refinery-Sulfur Plant | Saudi Aramco Ras Tanura |
| 25 | New Chemical Storage Building | Saudi Aramco Ras Tanura |
| 26 | Tanajib Office Building | Saudi Aramco Tanajib |

Projects in KSA

| S.NO | PROJECT | CLIENT |
|------|---|----------------------------------|
| 27 | Othmaniyah GOSP 1, 2 & 3 | Saudi Aramco Othmaniyah |
| 28 | Qatif Facilities | Saudi Aramco Qatif |
| 29 | Shedgum & Ainder | Saudi Aramco Shedgum & Ainder |
| 30 | Al-Nakheel Center | Al-Nakheel Group Jeddah |
| 31 | Private Island | Prince Naief Jeddah |
| 32 | Medical Tower | Saudi German Jeddah |
| 33 | Al-Awquaf Head Office | Ministry of Awquaf Jeddah |
| 34 | Shiekh Zaed Villa | Shiekh Zaed Villa Jeddah |
| 35 | SCECO Modon Substations | SCECO Jeddah |
| 36 | SCECO Mardoma Substation | SCECO Jeddah |
| 37 | SCECO Markaz Substations | SCECO Jeddah |
| 38 | 4 Substation for The King Abdullah Financial District (4 S/S for KAFD) - 2011 | Al-Fanar Co. / SEC-COA Riyadh |
| 39 | New Hiteen 380/132 kV (# 9005) BSP-2010 | Al-Fanar Co. / SEC-COA Riyadh |

Projects in KSA

| S.NO | PROJECT | CLIENT |
|------|--|---------------------------------|
| 40 | Government Printing Press | Finance Ministry Riyadh |
| 41 | Main Office Building | Ministry of Education Riyadh |
| 42 | Al Berk Substation | SCECO Riyadh |
| 43 | East Madina Substation | SCECO Riyadh |
| 44 | Bader Substation | SCECO Riyadh |
| 45 | King Saud University (Press Control on Science college Labs) | KSU Riyadh |
| 46 | Omrانيا Head Office | Omrانيا Riyadh |
| 47 | CAD middle east factory | CAD Riyadh |
| 48 | Hyper Panda-King Abdullah Street Branch | Panda Riyadh |
| 49 | Sudair Substation | SCECO Riyadh |
| 50 | Tamkeen Tower | Tamkeen Riyadh |
| 51 | Alrajhi Office- 44th & 45th floors Tamkeen Tower | Alrajhi Riyadh |
| 52 | 43rd, 44th, & 45th Bldg on KACST | KACST Riyadh |

Projects in KSA

| S.NO | PROJECT | CLIENT |
|------|-----------------------------|-------------------------------|
| 53 | Faraz power plant | SEC – ERB Eastern Province |
| 54 | Ibn Khaldoun Substations | SEC – ERB Yanbu |
| 55 | Qaisumah Substation | SEC – ERB Qaisumah |
| 56 | Sports facility ,al ahsa | SEC – ERB Al Ahsa |
| 57 | KFUPM Substation | SEC – ERB Dahran |
| 58 | Fursan Substation | SEC – ERB Jizan |
| 59 | Haii al Jumudah Substations | SEC - ERB |
| 60 | Arar Substation | SEC – ERB Arar |
| 61 | Khalidiya Substation | SEC - ERB |
| 62 | Urayirah Substation | SEC - ERB |
| 63 | Sabic 230kv Substation | SEC - ERB |
| 64 | Al Salama Substation | SEC- WRB Jeddah |
| 65 | AL SANAIYA | SEC- CENTRE |

Projects in KSA

| S.NO | PROJECT | CLIENT |
|------|--|-----------------------------|
| 66 | 115/13.8 Kv Substation ,Ghornatah. | SEC Jeddah |
| 67 | #8074,Sanaiyah Substation | SEC |
| 68 | #8830,Buraydah Substation | SEC |
| 69 | NCDC ,Dhahran Substation. | SEC Dhahran |
| 70 | 115/13.8KV,As-sha'te Substation | SEC Jeddah |
| 71 | Al Sanaeyah 230/69 kV BSP | SEC-CO Dammam- Indust II |
| 72 | Desalination Plant Extension | SWCC Aziziah, Khobar |
| 73 | Power Plant Extension | SWCC Aziziah, Khobar |
| 74 | Wotherford | Afifi Khobar |
| 75 | Medical Staff Housing | Royal Commission Yanbu |
| 76 | 8 Nos. Elementary and Intermediate Schools | Royal Commission Yanbu |
| 77 | Fire Stations | Royal Commission Yanbu |
| 78 | MSF Desalination Plant | SWCC Yanbu |

Projects in KSA

| S.NO | PROJECT | CLIENT |
|------|--|-----------------------------------|
| 79 | Yanbu-Schools | Royal Commission Yanbu |
| 80 | Hayyat Hotel | Hayyat Hotel Yanbu |
| 81 | Al-Falk Hotel | Al-Falk Hotel Madinah |
| 82 | Reinforcement of Hail-2 Power Plant - 2011 | Al-Fanar Co. / SEC-COA Hail |
| 83 | Shybah Power Plant | SWCC Shybah |
| 84 | Ministry of Interiorly – 2010 | Al-Rawaf Co. Hafr Al-Batin |
| 85 | Hafar University | SEC Hafr Al-Batin |
| 86 | Harad Gas Gathering Manifolds | Suedrohrbau Saudi Arabia Harad |
| 87 | Harad Project | Energy & Power Cont. Harad |
| 88 | STP Water Treatment | Saudi Aricon Hassa |
| 89 | Fadaliyah 34.5/11 kV Substation | SEC-CO Hassa |
| 90 | Al Manakh 69/13.8 kV Substation | SEC-CO AL-Hassa |
| 91 | Marine Facilities | Tanajib |

Projects in KSA

| S.NO | PROJECT | CLIENT |
|------|--|---|
| 92 | Al-Majmmah Hospital | Ministry of Health Majmmah |
| 93 | Al-Dakka Factory | Saudi Aricon Industrial Area 2 |
| 94 | Asir CPS Project | SEC-CO Asir |
| 95 | Bisha CPS Project | SEC-CO Bisha |
| 96 | Markaz Zallum 132/33 kV Substation | SEC-CO Al-Jouf |
| 97 | Al Jouf Substation | SEC – ERB Al Jouf |
| 98 | Qurriat Hospital | Ministry of Health Qurriat |
| 99 | Construction of new Manifa 380/115 kV BSP - 2010 | Central Air Conditioning Est. Manifa |
| 100 | Jizan Economic City Substation | SECECO Jizan |
| 101 | Dammam University – Faculty of Arts | Khudair for Trad.&Cont.Co. Dammam |



Projects in Kuwait

Projects in Kuwait

| S.NO | PROJECT NAME | STATUS | S.NO | PROJECT NAME | STATUS |
|------|---|--------------------------|------|---------------------------------|---------------------|
| 1 | VOX Cinemas | Completed & Running | 16 | Stem Cell Laboratory | Completed & Running |
| 2 | Gold Souk | Completed & Running | 17 | Failaha Archeology Center | Completed & Running |
| 3 | HOLIDAY INN | Completed & Running | 18 | Failaka Archeology Project | Completed & Running |
| 4 | STOCK EXCHANGE | Completed & Running | 19 | SAFAT COMMERCIAL CENTRE | Completed & Running |
| 5 | KUWAIT UNIVERSITY VARIOUS BUILDING | Completed & Running | 20 | BRITISH EMBASSY AT KUWAIT | Completed & Running |
| 6 | KUWAIT FUND FOR ARAB ECONOMIC DEVELOPMENT | Completed & Running | 21 | TURKISK EMBASSY AT KUWAIT | Completed & Running |
| 7 | BAYAN PALACE - CONFERENCE BUILDING | Completed & Running | 22 | SHEIKH ALI AL SABAH PALACE | Completed & Running |
| 8 | MINISTRY OF PLANNING H.Q BLDG. | Completed & Running | 23 | MEDICAL COLD STORE | Completed & Running |
| 9 | GOLD MARKET | Completed & Running | 24 | CANADIAN EMBASSY AT KUWAIT | Completed & Running |
| 10 | JAHARA POLICE HEADQUARTER | Completed & Running | 25 | CONFERENCE HALL (HYATT REGENCY) | Completed & Running |
| 11 | FARWANIYA POLICE HEADQUARTER | Completed & Running | 26 | HAWK AIR DEFENCE | Completed & Running |
| 12 | SIEF PALACE NEW EXTENSION BUILDING | Completed & Running | 27 | MELIA HOTEL (HYATT REGENCY) | Completed & Running |
| 13 | Swimming Pool Clubhouse | Completed & Running | 28 | THAMAMA GAS PROJECT U.A.E | Completed & Running |
| 14 | Romithiya School | Completed & Running | 29 | CANCER SURGERY HOSPITAL | Completed & Running |
| 15 | Um Al Qura School | Installation in progress | 30 | SHARQ NEIGHBOURHOOD CENTRE | Completed & Running |

Projects in Kuwait

| S.NO | PROJECT NAME | STATUS | S.NO | PROJECT NAME | STATUS |
|------|--|---------------------|------|---|---------------------|
| 31 | REQUAI RESIDENTIAL COMPLEX,BLOCK-"A" | Completed & Running | 46 | PCI BRANCH COMPUTER COMPLEX - FARWANIA | Completed & Running |
| 32 | KIDNEY CENTRE | Completed & Running | 47 | NEIGHBOURHOOD CENTER FARWANIA & KHAITAN | Completed & Running |
| 33 | MUKALLA HOSPITAL ADEN | Completed & Running | 48 | NEIGHBOURHOOD CENTER WEST FINTAS | Completed & Running |
| 34 | MEDICAL SCHOOL | Completed & Running | 49 | K.O.C.G.C-2,9,10 | Completed & Running |
| 35 | SHARQ CENTRE | Completed & Running | 50 | AL HASSAWI COLD STORES | Completed & Running |
| 36 | SHARQ COMMERCIAL CENTRE | Completed & Running | 51 | SALMIYA RESIDENTIAL BUILDING - 12,13,14 | Completed & Running |
| 37 | K.I.S.R TISSURE CULTURE LAB | Completed & Running | 52 | M.O.D TRAING CENTRE | Completed & Running |
| 38 | AL HASSAWI VILLA | Completed & Running | 53 | SOUK AL WATANIYA-KUWAIT | Completed & Running |
| 39 | BANKING STUDY CENTRE | Completed & Running | 54 | BUS STATION AL BALOUSH | Completed & Running |
| 40 | SULTAN COMPLEX -FARWNIA | Completed & Running | 55 | KABAD TRANSMITTING STATION | Completed & Running |
| 41 | BUKHAMSEEN OFFICE & COMMERCIAL BLDG | Completed & Running | 56 | SHAWAFAT COMMERCIAL BUILDING | Completed & Running |
| 42 | SULTAN & MUTAWA OFFICE & COMMERCIAL BLDG | Completed & Running | 57 | MINISTRY OF SOCIAL AFFAIRS | Completed & Running |
| 43 | KNPC - FUP /RMP BUILDING | Completed & Running | 58 | CAR PARK-II | Completed & Running |
| 44 | DISABLED CLUB - KUWAIT | Completed & Running | 59 | COMMERCIAL BAN | Completed & Running |
| 45 | KUWAIT UNIVERSITY MULTIPUPOSE BUILDING | Completed & Running | 60 | NUGRA COMMERCIAL CENTRE | Completed & Running |

Projects in Kuwait

| S.NO | PROJECT NAME | STATUS | S.NO | PROJECT NAME | STATUS |
|------|---|---------------------|------|--|---------------------|
| 61 | RELIGIOUS INSTITUTE | Completed & Running | 76 | AJYAD(FORUM) HOTEL MECCA | Completed & Running |
| 62 | PACKING & PLASTIC FACTORY | Completed & Running | 77 | KUWAIT ARCENT ZONE -II | Completed & Running |
| 63 | KUWAIT PAPER COMPANY | Completed & Running | 78 | SPEECH & AUDIO CENTER AT SABAH HOSPITAL | Completed & Running |
| 64 | TOYOTA GARAGE | Completed & Running | 79 | TELEPHONE EXCHANGE ADEN | Completed & Running |
| 65 | AL-AHLI BANK | Completed & Running | 80 | CENTRAL BANK NEW BUILDING | Completed & Running |
| 66 | BUKHAMSEEN-II | Completed & Running | 81 | KUWAIT FINANCE HOUSE (FAHD AL SALEM ST.BLDG.) | Completed & Running |
| 67 | SARAR AL-RUSHOOD SCHOOL(SOLAR ENERGY) | Completed & Running | 82 | ABYAN HOSPITAL | Completed & Running |
| 68 | AL OTHMAN CENTER | Completed & Running | 83 | KUWAIT AIRSPACE | Completed & Running |
| 69 | RUMAITHIYA CLINIC TYPE-13 | Completed & Running | 84 | DENTAL CLINIC FARWANIYA | Completed & Running |
| 70 | K.O.C G.C-1,3,6,21 | Completed & Running | 85 | HUSSAIN MAKKI AL JUMA COMPLEX | Completed & Running |
| 71 | ALI AL MAHMOUD VILLA(SOLAR ENERGY) | Completed & Running | 86 | KOC. GC-27 & 28 | Completed & Running |
| 72 | EID AL NASSAR CO./BUILDING | Completed & Running | 87 | LABORATRY BUILDING (EQUATE) | Completed & Running |
| 73 | KHALID AL MIJEL VILLA | Completed & Running | 88 | REPLACEMENT OF AHU'S IN VARIOUS HOSPITAL (MOH) | Completed & Running |
| 74 | FARAH CENTRE RESIDENTIAL BUILDING SALMIYA | Completed & Running | 89 | PATRIOT TRAINING BUILDING (MOD) | Completed & Running |
| 75 | COUNCIL OF MINISTERS ADEN | Completed & Running | 90 | RAWDA-HAWALLY CO-OP. SOCIETY | Completed & Running |

Projects in Kuwait

| S.NO | PROJECT NAME | STATUS | S.NO | PROJECT NAME | STATUS |
|------|---|---------------------|------|--|---------------------|
| 91 | PAAET WORKSHOP 125 | Completed & Running | 106 | QURAN YOUTH CENTER | Completed & Running |
| 92 | SALHIYA COMMERCIAL BUILDING | Completed & Running | 107 | CRC RESIDENTIAL COMPLEX - BENID AL GAR | Completed & Running |
| 93 | JAHRA SWIMMING POOL BUILDING | Completed & Running | 108 | ARAB TOWN ORGANIZATION | Completed & Running |
| 94 | KUWAIT FINANCE BUILDING AT HAWALLY | Completed & Running | 109 | DIRECT AID COMPLEX AT HAWALI | Completed & Running |
| 95 | KNPC MAA ACID REMOVAL PROJECT | Completed & Running | 110 | P.W.C AT FAHEL | Completed & Running |
| 96 | ISLAMIC FOUNDATION-KUWAIT | Completed & Running | 111 | SULIBIYA YOUTH CENTER | Completed & Running |
| 97 | SLAUGHTR HOUSE | Completed & Running | 112 | POLICE CO-OPERATIVES SOCITY | Completed & Running |
| 98 | KUWAIT NATIONAL BOTTLING CO. | Completed & Running | 113 | AMIRI DIWAN BLOCK -200 | Completed & Running |
| 99 | SHEIKH MUBARAK COMMERCIAL COMPLEX - SALMIYA | Completed & Running | 114 | COMMERCIAL COMPLEX AT FARWANIYA | Completed & Running |
| 100 | INTERNATIONAL FAIR GROUP HALL NO.8 | Completed & Running | 115 | SABAH HOSPITAL CORONARY UNIT | Completed & Running |
| 101 | YOUTH CENTER AL AYOUN AT JAHARA | Completed & Running | 116 | AL ASFOUR TOWER KUWAIT | Completed & Running |
| 102 | KUWAIT CONFERENCE CENTER RES. | Completed & Running | 117 | ADDCTED TREATMENT CENTER | Completed & Running |
| 103 | K I C BUILDING | Completed & Running | 118 | FAHAHEEL HEALTH CENTER - TYPE: 20 | Completed & Running |
| 104 | COMMERCIAL COMPLEX AR SHRQ | Completed & Running | 119 | (REPLACEMENT OF AHU's) | Completed & Running |
| 105 | KUWAIT ARCENT ZONE -I | Completed & Running | 120 | MENTAL HOSPITAL (REPLACEMENT OF AHU's) | Completed & Running |

Projects in Kuwait

| S.NO | PROJECT NAME | STATUS | S.NO | PROJECT NAME | STATUS |
|------|--|---------------------|------|---|---------------------|
| 121 | ADAN HOSPITAL (REPLACEMENT OF AHU's) | Completed & Running | 136 | KAIFAN CO-OPERATIVE SOCIETY | Completed & Running |
| 122 | DABBOUS COMMERCIAL COMPLEX | Completed & Running | 137 | KAMAL AL-SULTAN VILLA AT BIDA | Completed & Running |
| 123 | AL-DAISAM COMMERCIAL COMPLEX | Completed & Running | 138 | QUORTUB NEIGHBOURHOOD CENTER | Completed & Running |
| 124 | AL-NUSIF DIWANIYA | Completed & Running | 139 | KUWAIT NAVAL BASES SCHOOL | Completed & Running |
| 125 | AL-RAZI HOSPITAL(REPLACEMENT OF AHU's) | Completed & Running | 140 | PHYSICAL HOSPITAL(REPLACEMENT OF AHU's) | Completed & Running |
| 126 | SALWA NEIGHBOURHOOD CENTER | Completed & Running | 141 | POLICE CO-OPERATIVE SOCIETY | Completed & Running |
| 127 | BASMAH B-APARTMENT BLDG. SHAAB | Completed & Running | 142 | P.W.C AT FAHEL | Completed & Running |
| 128 | C.R.C OFFICE TOER | Completed & Running | 143 | SULIBIYA YOUTH CENTER | Completed & Running |
| 129 | CENTRAL KITCHEN AND SERVICES | Completed & Running | 144 | WAFRA REAL ESTATE CO. | Completed & Running |
| 130 | COMMERCIAL COMPLEX AT FARWANIYA | Completed & Running | 145 | HASSAWI PLACE | Completed & Running |
| 131 | CORRIDOR OF WARE HOUSE M.O.H - KUWAIT | Completed & Running | 146 | WAFARA COMMERCIAL & RES. COMPLEX - HAWALY | Completed & Running |
| 132 | KOC-VMS CRUDE PUMPING STATION AT GC'S | Completed & Running | 147 | KUWAIT NATIONAL ASSEMBLY PLANT ROOM | Completed & Running |
| 133 | GOLF COURSE PROJECT | Completed & Running | 148 | SCHOOL 2 AT ZAHARA FOR BOY'S | Completed & Running |
| 134 | INFECTIOUS DISEASE HOSPITAL (REPLACEMENT OF AHU's) | Completed & Running | 149 | SCHOOL 1 AT SABAH AL NASSER FOR GIRLS | Completed & Running |
| 135 | JAHRA HOSPITAL(REPLACEMENT OF AHU's) | Completed & Running | 150 | KHEIRAN NEW TOWN - KINDER GARDEN | Completed & Running |

Projects in Kuwait

| S.NO | PROJECT NAME | STATUS |
|------|--|---------------------|
| 151 | KHEIRAN NEW TOWN - GIRLS HIGH SCHOOL | Completed & Running |
| 152 | KHEIRAN NEW TOWN-INTERMEDIATE BOYS SCHOOL | Completed & Running |
| 153 | KHEIRAN NEW TOWN - A/C CENTRAL PLANT | Completed & Running |
| 154 | KHEIRAN NEW TOWN-INTERMEIDATE GIRLS SCHOOL | Completed & Running |
| 155 | CENTRAL PLANT BLDG | Completed & Running |
| 156 | NEW OFFICE BUILDING | Completed & Running |
| 157 | INFORMATRION CENTRE BLDG. | Completed & Running |
| 158 | JAHARA GOVERNORATE BUILDING | Completed & Running |
| 159 | KNA GURAD BUILDING | Completed & Running |
| 160 | MAHBOULA COMPLEX | Completed & Running |



Projects in Qatar

Commercial Building at Energy City Qatar - Plot D-20 (QB1689)

Doha, Qatar

Client: Energy City Qatar (ECQ)
Consultant: Design & Consult Bureau (DCB)
Contractor: Al Khayari Group Trading Contracting

- BMS Software – SAUTER Vision Center
- System – modulo5, ecos5, ecos302
- The BMS System is capable of integrating with ECQ Central Command Center.

Energy City Building-B11

Doha, Qatar

Client: Hany Tawfik Consulting Office

- BMS Software – SAUTER Vision Center
- System – modulo5, ecos5, ecos302
- The BMS System is capable of integrating with ECQ Central Command Center.

Moon Island - The Pearl Qatar

Doha, Qatar

Client: BLUU Qatar
Consultant: MZ & Partners
Contractor: Redco Construction - AlMana

- BMS Software – SAUTER Vision Center
- System – modulo5, ecos5, ecos302



The project's scope of work consist of a 2-storey residential building located at the Pearl Qatar, Doha, Qatar.

4 Star Hotel Apartments

Doha, Qatar

- BMS Software – moduWeb Vision
- System – modulo5, ecos5, ecos302

32 Factories
Doha, Qatar

- System – modulo5
- Standalone DDC panels with HMI for HVAC



Al Duhail & Umm Qarn Reservoirs & Pumping Stations

Doha, Qatar

- System – EYR203, EYE207, EYE200
- Standalone DDC panels with HMI for HVAC and light controls



The project includes the development of new and independent water infrastructure facilities in the Duhail and Umm Qarn communities on the outskirts of Doha, Qatar. The project includes of nine new 6-million gallon reservoirs at Umm Qarn, and one 25-million gallon reservoir at Al Duhail.

The work at Al Duhail includes constructing a total of six concrete reservoirs, a pump house, associated buildings, road works, and carry out landscaping for the Duhail Water Station project. The scope of work also includes the installation of a 15.9-kilometre water distribution pipeline.



Projects in Jordan

Client: MS Pharma

- BMS Software – SAUTER Vision Center
- System – modulo5
- Datapoints - 2000
- NeroTech has been contracted to replace the old BMS system and design and upgrade it up to the newest technology.



The project's scope of work consists of Chiller Plant Manager including 4 chillers, 34 AHUs and monitoring of 77 clean rooms parameters

BMS controls all HVAC and monitors plumbing and electrical systems.

Integration with 3rd party plants like Water Treatment Unit, Dehumidifiers & Chillers

Al Qall'ah Pharma

Amman, Jordan.

Client: Al Qall'ah Pharma
Consultant: MEDA Consulting
Contractor: Hawamdeh Constructions.

- BMS Software – SAUTER Vision Center
- System – modulo5
- Datapoints - 1500
- NeroTech has been contracted to re-design and supply BMS system complying with FDA requirements.



The project's scope of work consists of Building A (Factory) & Building B (Offices & Warehouses)

BMS controls all HVAC and monitors plumbing and electrical systems.

Client: PiONEER Co.
Consultant: Sirius QC
Contractor: Termotes

- BMS Software – SAUTER Vision Center
- System – modulo5
- Datapoints - 10500
- NeroTech has been contracted to re-design and supply BMS system complying with FDA requirements.



The project's scope of work is controls all Variable AHUs including 150 clean rooms that have CAVs, VAVs & Electrical heaters.

In addition to Chiller Plant Manager & Boiler System.

Orthodox Club – Multi Purpose Building Amman, Jordan.

Client: Orthodox Club
Consultant: Kayyali & Fasheh
Contractor: Civil Engineering Contracting

- BMS Software – moduWeb
- System – modulo5
- Datapoints - 800
- NeroTech has been contracted to supply BMS



The project's scope of work consists of 4 cellars floor as car parking.

BMS controls the lighting inside the parking using KNX protocol. In addition to that, controls the parking ventilation system.

BMS system monitors all pumps and electrical systems



Projects in Kenya

HILTON AIRPORT HOTEL

Nairobi, Kenya.



Client: Hilton

Consultant: EAMS Consulting Engineers

HVAC Sub Contractor: North Star Cooling
Systems LTD

Design and Supply CO Monitoring System and Stand Alone Controls

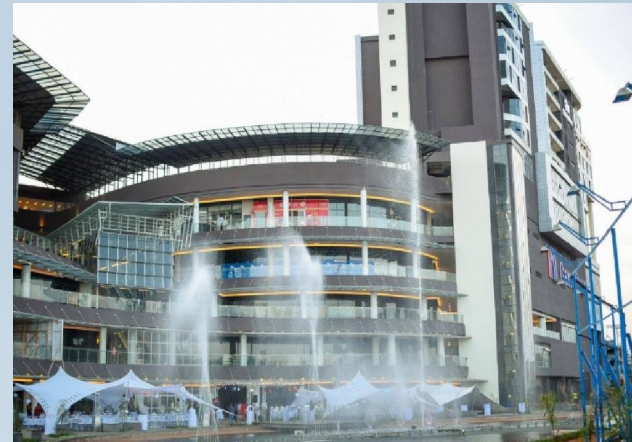


TWO RIVERS REL

Nairobi, Kenya.

Consultant: Maiteri Associates
HVAC Sub Contractor: North Star Cooling
Systems LTD

Design and Supply CO Monitoring System



AUSTRALIAN HIGH COMMISSION

Nairobi, Kenya.

Consultant: EMF GRIFFITHS
HVAC Sub Contractor: North Star Cooling
Systems LTD

Design and Supply Building Management System



AGA KHAN UNIVERSITY CENTRE

Nairobi, Kenya.

Consultant: Atkins Consulting Engineers
HVAC Sub Contractor: North Star Cooling
Systems LTD

Design and Supply Stand Alone Controls For Air Handling Units



KRIL HOSPITAL

Nairobi, Kenya.

Consultant: Credible Building Services LTD.
HVAC Sub Contractor: North Star Cooling
Systems LTD

Design and Supply Stand Alone Controls For Air Handling Units



RMA CENTRE
Nairobi, Kenya.

Consultant: BOSCH East Africa
HVAC Sub Contractor: North Star Cooling
Systems LTD

Design And Supply Co Monitoring System



CITY LODGE, TWO RIVERS HOTEL

Nairobi, Kenya.



Consultant: Loadline Engineering
HVAC Sub Contractor: North Star Cooling
Systems LTD

Design and Supply Co Monitoring System



ILRI

Nairobi, Kenya.

Consultant: Varsani Associates
HVAC Sub Contractor: North Star Cooling
Systems LTD

Supply Controls (Actuators And Thermostats Etc.)





Projects in Iran

Lorestan Petrochemical Company
Lorestan, Iran

Client: Lorestan Petrochemical Company
Consultant: Nargan
Contractor: Tirgan Industries Engineering
of HVAC & Control

- BMS Software – SAUTER Vision Center
- System – modulo5
- Datapoints - 1000
- SAUTER has been contracted to design and supply BMS, energy optimization and performance contract.



Lorestan Petrochemical Company
Lorestan, Iran

Client: Lorestan Petrochemical Company
Consultant: TRG
Contractor: Tirgan Industries Engineering
of HVAC & Control

- BMS Software – SAUTER Vision Center
- System – modulo5
- Datapoints - 1000
- SAUTER has been contracted to design and supply BMS, energy optimization and performance contract.



JAM Petrochemical Complex

Asaluyeh, bushehr, Iran

Client: JAM Petrochemical Complex

Consultant: Sazeh

Contractor: Tirgan Industries Engineering
of HVAC & Control

- BMS Software – SAUTER Vision Center
- System – modulo5
- Datapoints - 1000
- SAUTER has been contracted to design and supply BMS, energy optimization and performance contract.



Laleh Petrochemical Company
Mahshahr, Iran

Client: Laleh Petrochemical Company

Consultant: Ista Gouya

Contractor: Tirgan Industries Engineering
of HVAC & Control

- BMS Software – SAUTER Vision Center
- System – modulo5
- Datapoints - 1000
- SAUTER has been contracted to design and supply BMS, energy optimization and performance contract.



Kangan Petro Refining Co. (KPRC)
Bandar-e Kangan, Iran

Client: Kangan Petro Refining Co. (KPRC)

Consultant: EIED

Contractor: Tirgan Industries Engineering
of HVAC & Control

- BMS Software – SAUTER Vision Center
- System – modulo5
- Datapoints - 1000
- SAUTER has been contracted to design and supply BMS, energy optimization and performance contract.



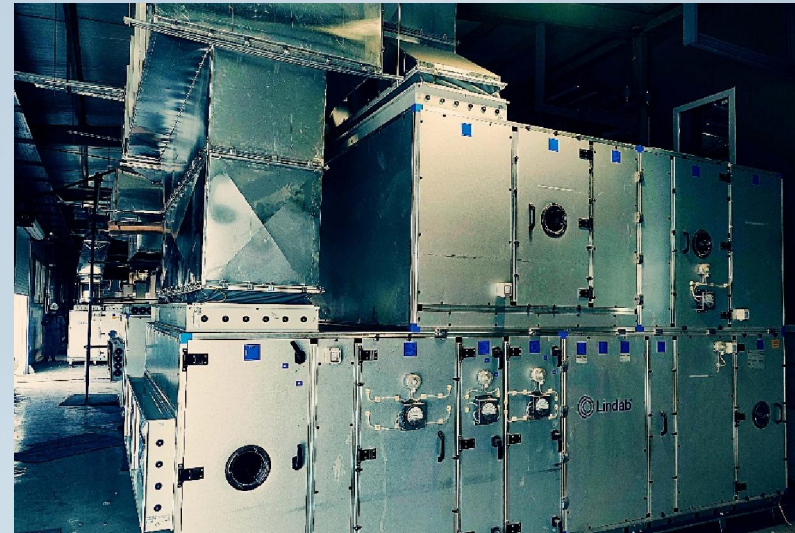
Mana Energy Pak
Khomein, Iran

Client: Mana Energy Pak

Consultant: Ista Gouya/TRG

Contractor: Tirgan Industries Engineering
of HVAC & Control

- BMS Software – SAUTER Vision Center
- System – modulo5
- Datapoints - 1000
- SAUTER has been contracted to design and supply BMS, energy optimization and performance contract.



West Nikan Hospital
Tehran, Iran

Client: West Nikan Hospital

Consultant: Abadgaran

Contractor: Tirgan Industries Engineering
of HVAC & Control

- BMS Software – SAUTER Vision Center
- System – modulo5
- Datapoints - 1000
- SAUTER has been contracted to design and supply BMS, energy optimization and performance contract.



AbooAliSina Organ Transplant Hospital Shiraz, Iran

Client: AbooAliSina Organ Transplant Hospital
Consultant: Yasha-Ertebat
Contractor: Yasha Electronic Co.

- BMS Software – SAUTER Vision Center
- System – modulo5
- Datapoints - 10500
- SAUTER has been contracted to design and supply BMS, energy optimization and performance contract.



- Design and implementation of intelligent control system of Mechanical room, air conditioners, ventilation and integrated control of intelligent lighting system of 700-bed hospital with 85000 square meters of infrastructure
- BMS controls all HVAC and monitors plumbing and electrical systems.
- Energy Monitoring systems monitors all electrical energy meters for providing advance energy management and energy analytics.

Client: University of Isfahan
Consultant: Yasha-Ertebat
Contractor: Ertebat Saz Co.

- BMS Software – SAUTER Vision Center
- System – modulo5
- Datapoints - 1000
- SAUTER has been contracted to design and supply BMS, energy optimization and performance contract.



- Design and implementation of intelligent control system of 2 Mechanical rooms, air conditioners, ventilation
- BMS controls all HVAC and monitors plumbing and electrical systems.
- Energy Monitoring systems monitors all electrical energy meters for providing advance energy management and energy analytics.

Negareh Limited Surgery Center Isfahan, Iran

Client: Negareh Limited Surgery Center

Consultant: Yasha-Ertebat

Contractor: Ertebat Saz Co.

- BMS Software – SAUTER Vision Center
- System – modulo5
- Datapoints - 1000
- SAUTER has been contracted to design and supply BMS, energy optimization and performance contract.



- Design and implementation of intelligent control system of air conditioners, ventilation and integrated control of intelligent lighting system
- BMS controls all HVAC and monitors plumbing and electrical systems.
- Energy Monitoring systems monitors all electrical energy meters for providing advance energy management and energy analytics.